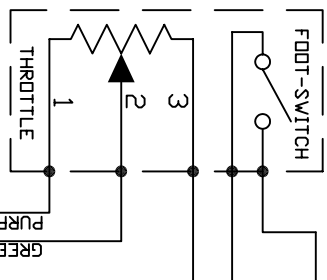
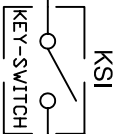


THROTTLE MAY INCLUDE INTERLOCKS NOT SHOWN

THROTTLE



KSI LOGIC POWER



MR752
-DR-
6A06

BATTERY VDC	12-48V 72V
FUSE VDC RATING	60V 100V

PART NO. Doc100-044
1/19/2007

SOL COIL

BIG RED

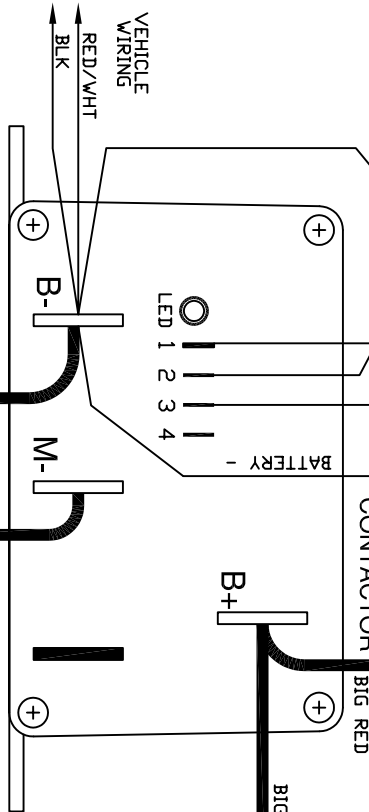
FUSE

CONTACTOR RATING (Observe Coil Voltage)	400amp	450	650
250amp	300	400	450
300	400	450	650

ANN250	ANN400
300	450
400	650

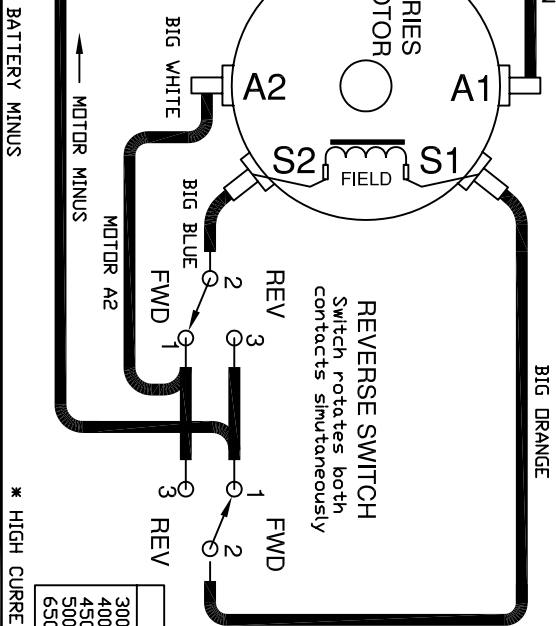
PRE-CHARGE RESISTOR	250_ohm 10W (24-36V)	470_ohm 10W (48V)	1000_ohm 10W (72V)
---------------------	----------------------	-------------------	--------------------

Series - CLUB CAR Year: 1996 and NEWER SERIES MOTOR



CONTROLLER PIN OUT

TAB	FUNCTION
1	KSI VOLTAGE
2	THROTTLE
3	THROTTLE
4	1/2 SPEED REVERSE
B+	BATTERY POSITIVE
B-	BATTERY NEGATIVE
M-	MOTOR MINUS



POWER WIRE GAUGE	STOCK (6AWG)	4AWG	4AWG-2AWG	2AWG-1/0
300	400	450	500	650

NOTES:

- * FUSES REQUIRED FOR ALL INSTALLATIONS
- * DIODE REQUIRED ACROSS COILS / RELAYS
- * PRE-CHARGE RESISTOR REQUIRED
- > ASSUMES FOOTSWITCH IS OPEN WHEN THROTTLE OFF WITHOUT NOTICE
- > D&D RESERVES THE RIGHT TO CHANGE DOCUMENTATION
- > D&D MAKES NO WARRANTY AS TO THE ACCURACY, SUFFICIENCY, OR SUITABILITY OF ANY TECHNICAL OR OTHER INFORMATION PROVIDED
- > SEE OPERATORS MANUAL FOR MORE INFORMATION

DO NOT SCALE DRAWING

REVISIONS		DWG SCALE: NTS	
REV.	ECO.	DATE	APVD
A	010407	010407	TT

D&D Motor Systems, Inc.	215 Park Ave. Syracuse, NY 13204
PH: (315) 701-0635	
TITLE: Series-Club Car 1996 and Newer Wiring Diagram	
FILE: _DMC-Swiss-Clubcar-1996-wiring-diag	